

Alaska Department of Fish and Game

Habitat Section
Southeast Region



West Icy Bay Uncataloged Stream

ADDITION

Water body name: Jelly Creek

Survey date: 8/22/2024

Quad: Bering Glacier A-3

Species & Lifestage:

Upper Reach Latitude: 60.023436 **Longitude:** -141.998036

Survey crew: NJ, CD, FC

Lower Reach Latitude: 60.019302 **Longitude:** -142.000235

Findings: We surveyed this uncataloged stream using a backpack electrofisher and GPS and captured juvenile coho salmon and Dolly Varden. This stream is wide with lots of large, mobile material. Water flows into braided channels throughout the riverbed; some channels abandoned. Stopped survey due to time but fish habitat likely continues upstream (Table 1; Figures 1–3).

Recommendations: Add this uncataloged stream to the anadromous waters catalog for rearing coho salmon from its mouth in the intertidal up to waypoint 1126 (Figure 4).

Nomination: Pending

Table 1.–West Icy Bay Uncataloged Stream survey data.

Waypoint	Latitude	Longitude	Notes	Stream Width ft	Stream Substrate	Habitat Features	Gradient %	Sample Effort	Sample Results
1123	60.020011	-141.999054	Channel is braided and spread out on the beach. Beginning survey here.		Cobble		1-2		
1124	60.021809	-141.998899	An old road crossing. Water is somewhat silted, but mostly clear.		Cobble Sand		1-2		
1125	60.022992	-141.998401	Channel shifts over onto forest edge likely very mobile in this area.	50+					2 DV
1126	60.023447	-141.998092	Turning around here to prioritize other streams, coho captured but one dropped from net. Fish habitat likely continues up the valley for quite some time. Future investigation if development is considered in this area. There does not appear to be a gradient barrier on the imagery of the valley.						2 CO



Figure 1.–Juvenile coho salmon caught at waypoint 1126.



Figure 2.—Looking downstream at waypoint 1125.



Figure 3.—Looking downstream and waypoint 1124.

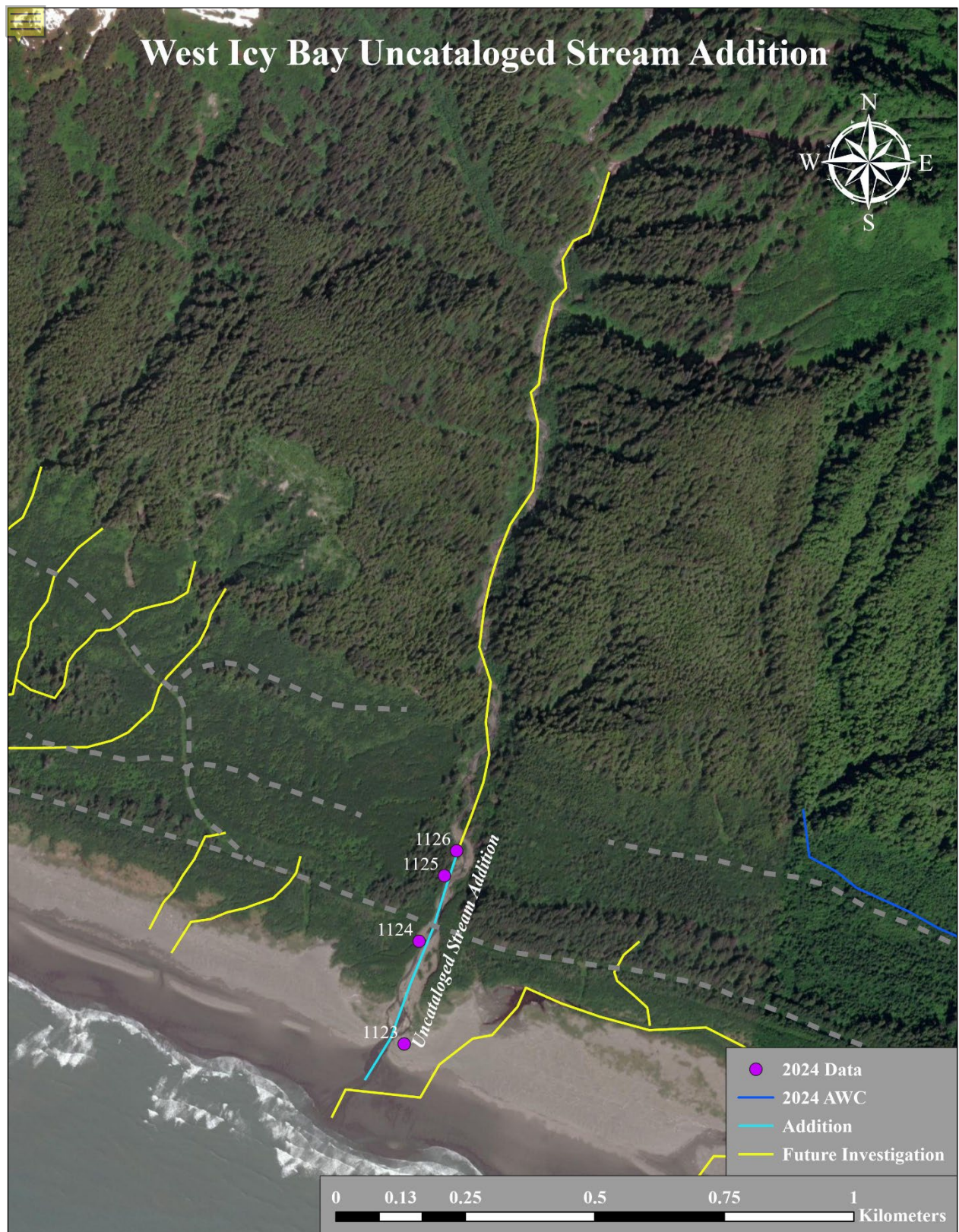


Figure 4.—West Icy Bay Uncataloged Stream addition map.